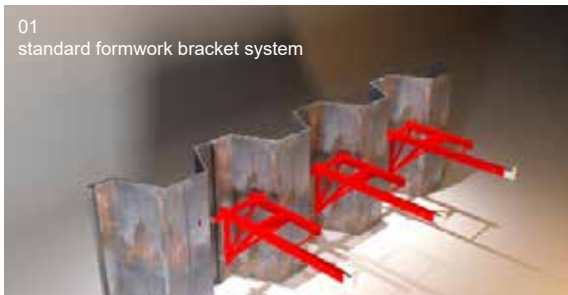


# NEW DUO concrete formwork system

01  
standard formwork bracket system



02  
standard formwork panel system



03  
New duo system side shuttering



#### FEATURES

- . Robust High Strength cast steel body. High alloy steel plunger
- . Plunger mechanism concealed for maximum protection
- . Plunger mechanism easily detachable for maintenance
- . Heavy web stiffening to withstand side lift (i.e. 90° to the axis) imposed when lifting piles from a stack  
(See "Safety Check List" for correct working practice)

